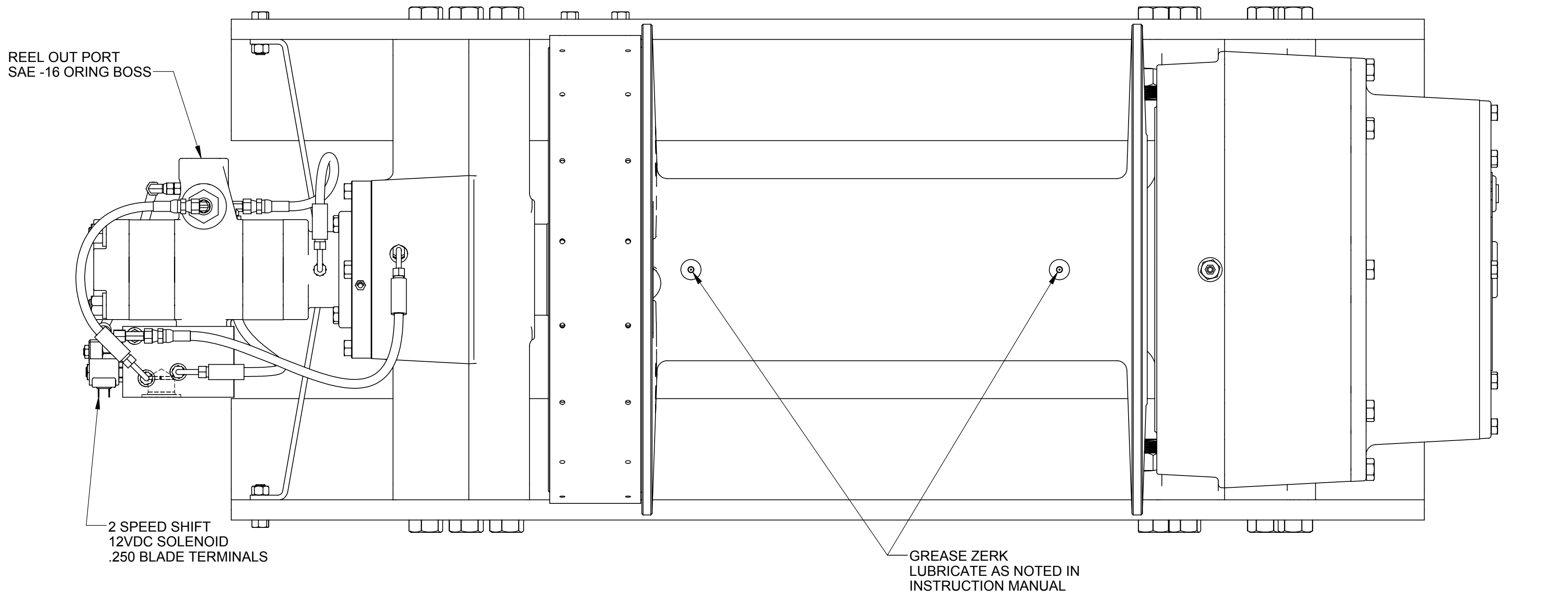
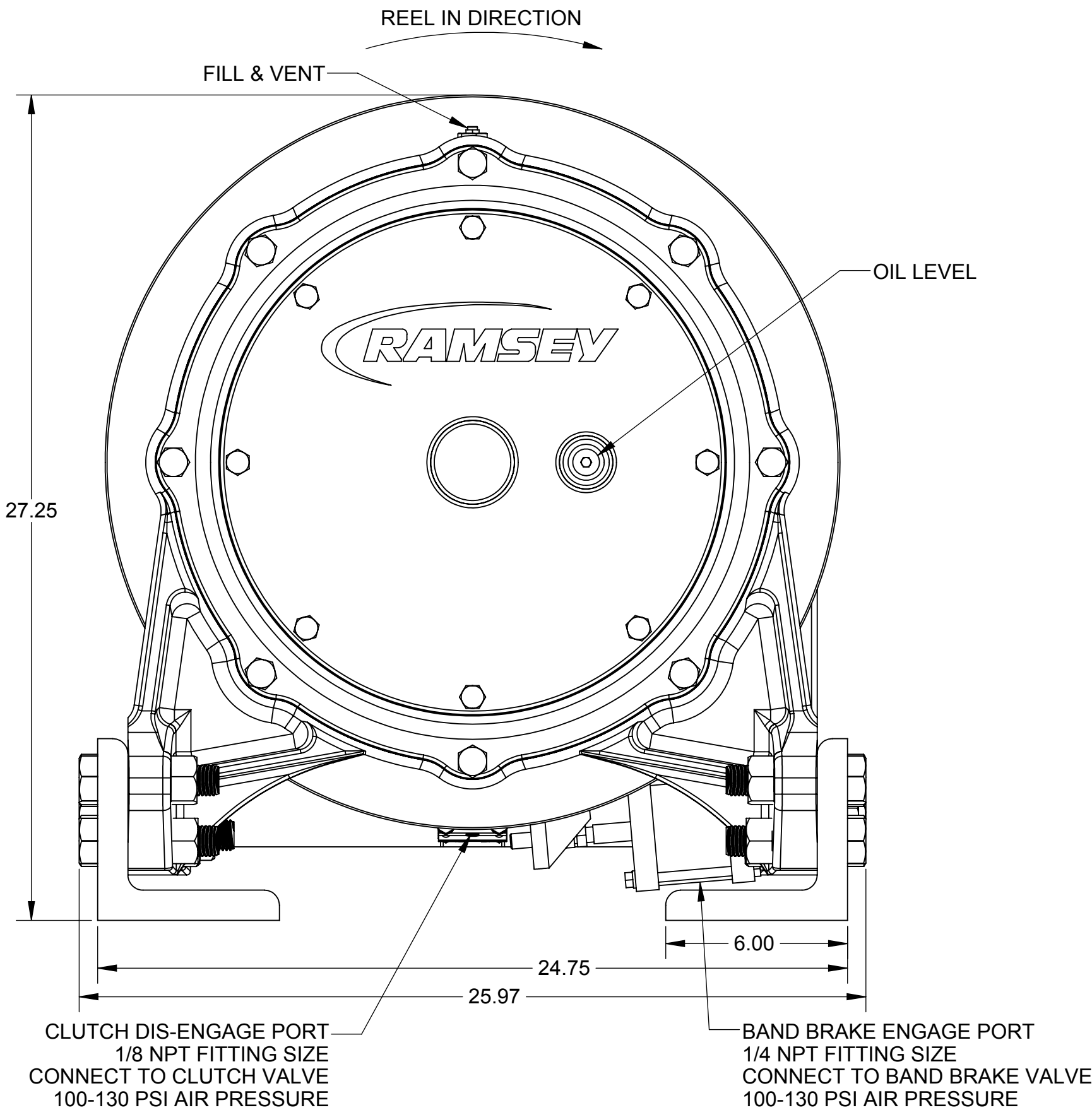
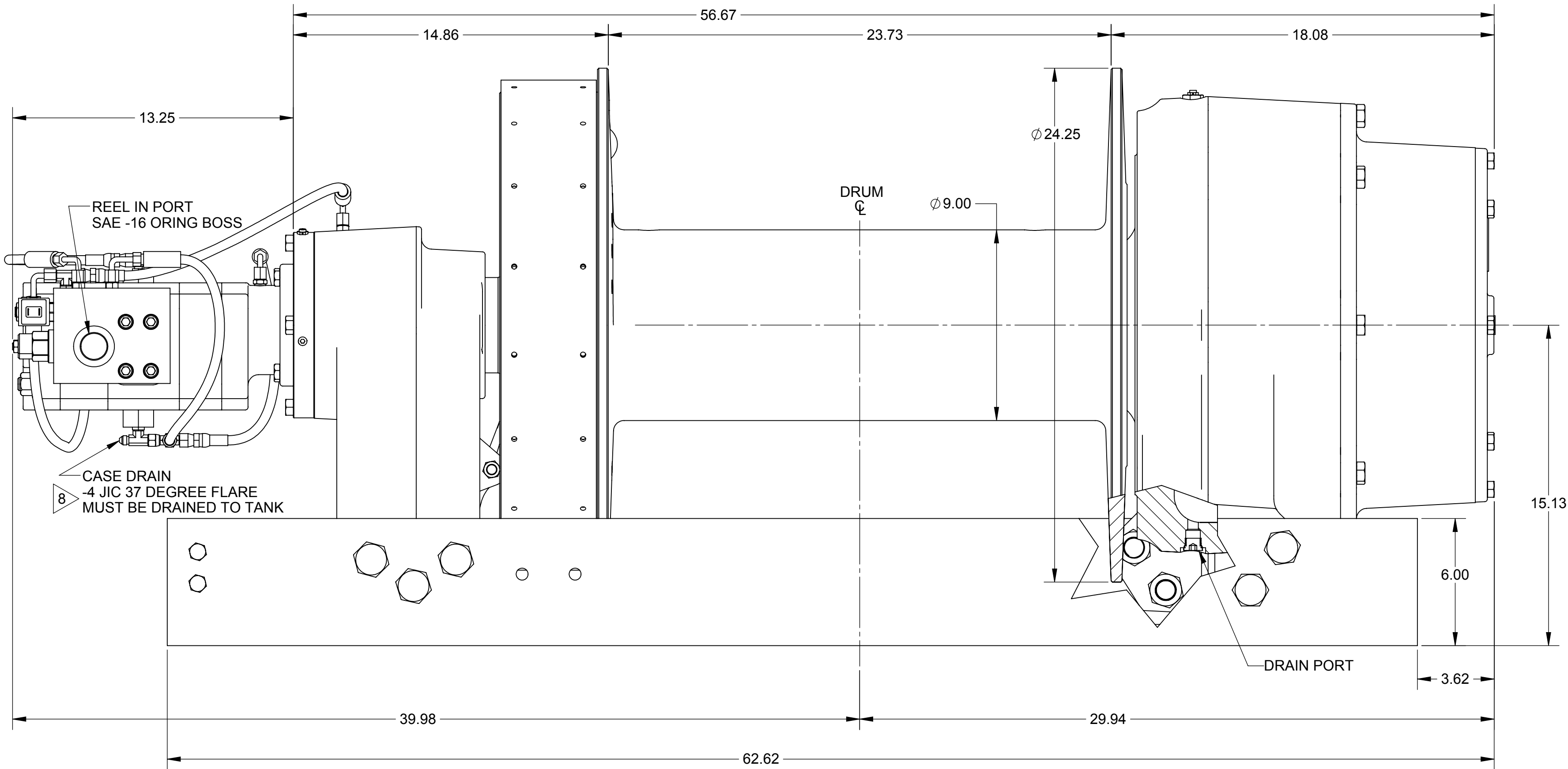



THIS PRINT IS PROVIDED ON A RESTRICTED BASIS AND IS NOT TO BE USED IN ANY WAY DETRIMENTAL TO THE INTERESTS OF THE RAMSEY WINCH COMPANY.				
REVISIONS				
SYM	DESCRIPTION	ECN	DATE	DR.
A	RELEASE FOR PRODUCTION	14654	4-28-09	JJ
B	ADDED VARIOUS DIMENSIONS AND NOTES	30368	11-8-12	JAM



PERFORMANCE										
APPROXIMATE WEIGHT:			2200 LBS							
WORKING PRESSURE:			2600 PSI							
CABLE DIAMETER:			1 1/8 INCH							
FLOW:			60 GPM							
LAYER	CABLE CAPACITY		LOW SPEED				HIGH SPEED			
			LINE PULL		LINE SPEED		LINE PULL		LINE SPEED	
	Ft	m	Lb	Kg	fpm	mpm	Lb	Kg	fpm	mpm
1	50	15	130000	58960	16	4.8	60000	27210	34	10.3
2	110	33	106300	48210	19	5.8	49000	22220	40	12.1
3	180	54	90000	40820	22	6.6	41500	18820	47	14.2
4	265	80	78000	35380	25	7.6	36000	16320	54	16.4
5	360	109	68800	31200	28	8.5	31700	14370	61	18.5
6	465	141	61500	27890	32	9.7	28400	12880	68	20.6

- NOTES:
- WINCH IS NOT TO BE USED FOR LIFTING OR MOVING OF PERSONS.
  - 5 WRAPS OF CABLE MUST BE LEFT ON THE DRUM TO HOLD LOAD.
  - MOTOR PORTS ARE SAE-16 O-RING
  - SHIFT SOLENOID IS 12VDC
  - 100-130 PSI AIR PRESSURE REQUIRED FOR BAND BRAKE AND CLUTCH CYLINDERS.
  - LUBRICANT CAPACITY 15 QUARTS
  - RATIO: 320:1
  - CASE DRAIN MUST BE CONNECTED FOR PROPER WINCH FUNCTION.



INCH TOLERANCE UNLESS OTHERWISE SPECIFIED			NAME		DATE		TITLE  ASSEMBLY 130K WILDCAT		<div>RAMSEY WINCH COMPANY TULSA, OKLAHOMA</div>				
DECIMALS			DRAWN BY		HLW							12-15-08	
.X ±.06			.XX ±.030			.XXX ±.010							
ANGULAR-±0° 30' DEGREES			APPROVED BY		SEE ECN				<div>127300</div> <div>SHEET 1 OF 1</div>				
UNLESS OTHERWISE SPECIFIED, ALL DIMENSIONS ARE IN INCHES.			SCALE (DO NOT SCALE)		1:1								
			NEXT ASSY						REV. B				