

CHAGNES	DETAILS	DATE	WIRTE	APPROVE

# SOLAR 340LC- V

CONTENTS	PAGE
1. GENERAL SPECIFICATION .....	2
2. SPECIFICATION COMPARISON .....	3
3. ENGINE SYSTEM.....	4
- ENGINE PERFORMANCE CURVE .....	6
4. HYDRAULIC SYSTEM.....	7
- PUMP PERFORMANCE CURVE.....	9
5. SWING MECHANISM .....	10
6. TRAVEL SYSTEM .....	12
7. UNDER CARRIAGE .....	13
8. HYDRAULIC CYLINDERS .....	14
9. FRONT.....	15
- BREAKER CIRCUIT.....	17
10. DIMENSIONS AND WORKING RANGE .....	18
11. LIFTING CAPACITIES .....	20
12. PERFORMANCE DATA.....	24
13. NOISE LEVEL .....	24
14. SUB GROUP WEIGHT.....	25
15. USER SERVICE DATA.....	26
16. CIRCUITS .....	27
- HYDRAULIC CIRCUIT : 499- 00048.....	27
- ELECTRIC CIRCUIT : 599- 00035.....	27

MODEL	SOLAR 340LC- V			1/27
-------	----------------	--	--	------

## 1. GENERAL SPECIFICATION

ITEMS		UNIT	STD.	OPT. 1	OPT. 2
OPERATING WEIGHT		ton	33.9	34.0	33.9
BUCKET CAPACITY (PCSA)		m <sup>3</sup>	1.48	1.83	1.25
ENGINE	RATED POWER	PS/rpm	250 / 1900		
	MAX. TORQUE	kg.m/rpm	108 / 1400		
SYSTEM PRESSURE (WORK/TRAVEL)		kg/cm <sup>2</sup>	330 (350) / 330		
SWING SPEED		rpm	8.9		
TRAVEL SPEED (High/Low)		km/h	4.6 / 3.1		
GRADEABILITY		%(deg)	70 (35°)		
SHOE WIDTH		mm	600		
GROUND PRESSURE		kg/cm <sup>2</sup>	0.650	0.652	0.650
DIGGING FORCE	BUCKET (Nor./Press. Up)	ton	20.6 / 21.8	←	←
	ARM (Nor./Press. Up)	ton	16.4 / 17.4	20.2 / 21.2	14.0 / 14.9
WORKING RANGE	MAX. DIGGING REACH	mm	11230	10620	11970
	MAX. DIGGING DEPTH	mm	7670	7070	8480
	MAX. DIGGING HEIGHT	mm	10440	10010	10820
	REAR SWING RADIUS	mm	3500	←	←
	MIN. SWING RADIUS	mm	4494	4510	4470
TRANSPORTATION DIMENSION	OVERALL LENGTH	mm	11330	11425	11340
	OVERALL WIDTH	mm	3280	←	←
	OVERALL HEIGHT	mm	3550	3600	3990
	GROUND CLEARANCE	mm	506	←	←
	TRACK LENGTH	mm	4960	←	←
	TRACK GAUGE	mm	2680	←	←
OPTION ATTACHMENT		<ul style="list-style-type: none"> <li>• BOOM : STD. 6500mm</li> <li>• ARM : STD. 3200mm, SHORT 2600mm, LONG 4000mm</li> <li>• BUCKET (PCSA) : STD. 1.48m<sup>3</sup> OPT. 1.25m<sup>3</sup>, 1.61m<sup>3</sup>, 1.83m<sup>3</sup> OPT.(HD) 1.20m<sup>3</sup>, 1.42m<sup>3</sup>, 1.65m<sup>3</sup>, 1.79m<sup>3</sup>, 2.01m<sup>3</sup></li> <li>• SHOE : STD. 600mm(G) OPT. 700mm(G), 800mm(G), 850mm(G) OPT.(SEALED LINK) 600mm(G), 700mm(G), 800mm(G), 850mm(G)</li> <li>• COUNTER WEIGHT : STD. 6400kg</li> </ul>			
		<ul style="list-style-type: none"> <li>• STANDARD : STD. BOOM(6500mm), STD. ARM(3200mm), STD. BUCKET(1.48m<sup>3</sup>)</li> <li>• OPTION 1 : STD. BOOM(6500mm), SHORT ARM(2600mm), OPT. BUCKET(1.83m<sup>3</sup>)</li> <li>• OPTION 2 : STD. BOOM(6500mm), LONG ARM(4000mm), OPT. BUCKET(1.25m<sup>3</sup>)</li> </ul>			

MODEL

SOLAR 340LC-V

2/27

## 2. SPECIFICATION COMPARISON

ITEMS		UNIT	CAT	KOMATSU	HITACHI	KOBELCO	HYUNDAI
			330B L	PC350LC- 7	ZAXIS330LC	SK330LC	R3300LC- 3
OPERATING WEIGHT		ton	33.8	33.4	31.6	35.0	31.3
BUCKET CAPACITY (CECE)		m <sup>3</sup>	1.3	1.15	1.2	1.2	1.27
ENGINE	RATED POWER	PS/rpm	225/1800	245/1900	250/2000	240/2200	220/1900
	MAX. TORQUE	kg.m/rp			89/1700	84/1800	102/1400
SYSTEM PRESSURE (WORK/TRAVEL)		kg/cm <sup>2</sup>	330(350)/330	380/380	320(350)/350	350(385)350	
SWING SPEED		rpm	10.0	9.5	11.8	9.1	9.7
TRAVEL SPEED (High/Low)		km/h	4.6	5.5/4.5/3.2	5.5/3.8	5.8/3.4	5.0
GRADEABILITY		%(deg)	70(35)	70(35)	70(35)	70(35)	70(35)
SHOE WIDTH		mm	750	600	600	600	600
GROUND PRESSURE		kg/cm <sup>2</sup>		0.64	0.60	0.64	0.60
DIGGING FORCE	BUCKET (Nor./Press. Up)	ton	19.9	21.7/23.2	19.3/21.1	22.5/24.7	17.7/19.4
	ARM (Nor./Press. Up)	ton	15.8	16.3/17.4	15.4/16.8	16.8/18.5	
WORKING RANGE	MAX. DIGGING REACH	mm	11220	11100	11100	11200	11140
	MAX. DIGGING DEPTH	mm	7490	7380	7380	7490	7500
	MAX. DIGGING HEIGHT	mm	10380	10210	10230	10490	10210
	REAR SWING RADIUS	mm	3500	3450	3320	3500	
	MIN. SWING RADIUS	mm	3500	4310	4490	4290	
TRANSPOR - TATION DIMENSION	OVERALL LENGTH	mm	11010	11140	10970	11200	10960
	OVERALL WIDTH	mm	3340	3190	3190	3200	3280
	OVERALL HEIGHT	mm	3290	3280	3230	3360	3360
	GROUND CLEARANCE	mm	510	500	500	500	505
	TRACK LENGTH	mm	5020	4955	4950	4980	
	TRACK GAUGE	mm	2590	2590	2590	2600	2680
OPTION ATTACHMENT			ARM 2.20m 2.55m 3.19m STD 4.02m BUCKET 0.46 m <sup>3</sup> 1.00 m <sup>3</sup> 1.20 m <sup>3</sup> 1.40 m <sup>3</sup> 1.60 m <sup>3</sup> SHOE 600mm(G) 700mm(G) 800mm(G) 850mm(G)	ARM 2.66m 3.20m STD 4.00m BUCKET 1.00 m <sup>3</sup> 1.20 m <sup>3</sup> 1.40 m <sup>3</sup> 1.60 m <sup>3</sup> SHOE 600mm(G) 800mm(G) 910mm(T)			
			* (G) : GROUSER (P) : PLATE (T) : TRIANGLE				

MODEL

SOLAR 340LC- V

3/27

### 3. ENGINE SYSTEM

#### 1) ENGINE

MAKER & MODEL	:	DAEW00 DE12TIS
RATED HORSE POWER	:	250 PS @ 1900 rpm (KS R1004) 184 kW (250 PS) @ 1900 rpm (DIN 6271) 184 kW (247 HP) @ 1900 rpm (SAE J1349)
MAX. TORQUE	:	108 kgf.m @ 1400 rpm
FUEL CONSUMPTION	:	160 g/ps.hr @ RATED SPEED
TYPE	:	4 - CYCLE ATA INTERCOOLER IN - LINE
DISPLACEMENT	:	11051 cc
No. OF CYLINDER	:	6
BORE DIA. & STROKE	:	123 x 155 mm
COMPRESSION RATIO	:	18.5
HIGH IDLE SPEED	:	2050 ± 60 rpm
LOW IDLE SPEED	:	980 ± 50 rpm
STARTING MOTOR	:	24 V x 6.0 kW

#### 2) ALTERNATOR

VOLTAGE	:	24 V
RATING AMPERES	:	50 A

#### 3) BATTERY

SYSTEM VOLTAGE	:	24 V
QUANTITY	:	12 V x 2
CAPACITY (AMP)	:	150 AH

#### 4) PUMP DRIVE

DRIVE TYPE	:	FLEXIBLE COUPLING JOINT
PERMISSIBLE TORQUE & RPM	:	320 kgf.m, 3600 rpm

#### 5) AIR CLEANER

TYPE	:	DOUBLE ELEMENT
FILTRATION AREA	:	12.15 m <sup>2</sup> (OUTER), 1.59 m <sup>2</sup> (INNER)
SIZE (DIA.x LENGTH)	:	350 mm x 500 mm

MODEL

SOLAR 340LC-V

4/27

6) MUFFLER

DESCRIPTION : SIDE INLET, VERTICAL TAIL PIPE  
SIZE (DIA.x LENGTH) : 400 mm x 820 mm

7) FAN

TYPE : SUCKER, 9-BLADE, PLASTIC  
SIZE : 812.8 mm  
RPM AT RATED ENGINE RPM : 1368 rpm  
PULLEY RATIO : 0.72

8) RADIATOR

TYPE : FLAT PLATE FIN

9) OIL COOLER

TYPE : FLAT PLATE FIN

10) CHARGE AIR COOLER (INTERCOOLER)

TYPE : CORRUGATE WAVE FIN

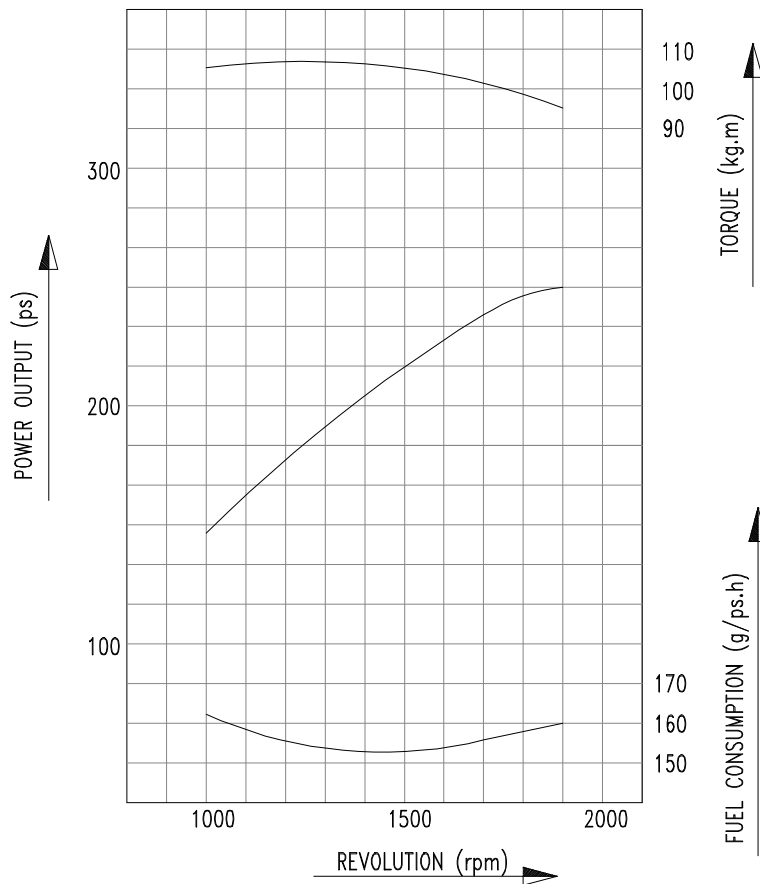
MODEL

SOLAR 340LC-V

5/27

- ENGINE PERFORMANCE CURVE

CONDITION	SPECIFICATION
BAROMETIC PRESSURE	760 mmHg (20 )
COOLING FAN	812.8 , 9 - BLADE , SUCKER
ALTERNATOR	24V x 50A
AIR CLEANER	0
MUFFLER	0



PERFORMANCE STANDARARD	KS- R1004
POWER (MAX , RATED)	250 PS/ 1900 rpm
MAX. TORQUE	108 kg.m/ 1400 rpm
FUEL CONSUMPTION (MAX , RATED)	160 g/ps.h

MODEL	SOLAR 340LC-V			6/27
-------	---------------	--	--	------

#### 4. HYDRAULIC SYSTEM

##### 1) MAIN PUMP

TYPE	:	PARALLEL, BENTAXIS, PISTON
QUANTITY	:	2
DISPLACEMENT	:	140 cc/rev
MAX. FLOW RATE	:	2 x 262 Liter/min
WEIGHT	:	290 kg

##### 2) PILOT PUMP

TYPE	:	GEAR
DISPLACEMENT	:	11.86 cc/rev
MAX. FLOW RATE	:	22.5 Liter/min
RELIEF VALVE PRESSURE	:	40 kgf/cm <sup>2</sup>

##### 3) CONTROL VALVE

TYPE	:	PILOT CONTROL
SPOOL DIA.	:	28 mm
SPOOL ARRANGEMENT	:	TR, OPT, SWING, BOOM2, ARM1 TL, BUCKET, BOOM1, ARM2
RELIEF VALVE PRESSURE	:	330/350 kgf/cm <sup>2</sup>
PORT RELIEF VALVE PRESSURE	:	360 kgf/cm <sup>2</sup>
ACCESSARY VALVES	:	FOOT RELIEF VALVE, BOOM HOLDING VALVE, ARM HOLDING VALVE

##### 4) REMOTE CONTROL VALVE; IMPLEMENT

TYPE	:	PILOT (2- STAGE JOYSTICK)
PRESSURE/STROKE CHARACTERISTIC	:	28 kgf/cm <sup>2</sup> (@ 6.5mm(1,3), 7.5mm(2,4) STROKE)

MODEL

SOLAR 340LC-V

7/27

5) REMOTE CONTROL VALVE; TRAVEL

TYPE : PILOT  
PRESSURE/STROKE CHARACTERISTIC : 27 kgf/cm<sup>2</sup> (@ 4.8mm STROKE)

6) SOLENOID VALVE

RATED CAPACITY : DC 24V, 22W @25  
FUNCTION : TRAVEL 2- SPEED, PRESSURE UP,  
SWING PRIORITY

7) PILOT VALVE

RATED CAPACITY : DC 24V, 22W @25  
FUNCTION : PILOT CUT OFF

8) ACCUMULATOR

NITROGEN CHARGE PRESSURE : 10 ± 1 kgf/cm<sup>2</sup>  
VOLUME : 0.32 Liter

9) BY- PASS VALVE (1)

CRACKING PRESSURE : 2.5 kgf/cm<sup>2</sup> @ 10 Liter/min

10) BY- PASS VALVE (2)

CRACKING PRESSURE : 1.0 kgf/cm<sup>2</sup> @ 10 Liter/min

11) FILTERS

11- 1) RETURN FILTER

TYPE : PAPER ELEMENT  
SIZE : 10 mesh

11- 2) PILOT FILTER

TYPE : PAPER ELEMENT  
SIZE : 10μ , 620 cm<sup>2</sup>  
BY- PASS VALVE SETTING : 1.7 kgf/cm<sup>2</sup>

11- 3) SUCTION FILTER

SIZE : 177μ (80 mesh)

12) AIR BREATHER

CRACKING PRESSURE : - 0.05/+0.5 kgf/cm<sup>2</sup>

MODEL

SOLAR 340LC- V

8/27

- PUMP PERFORMANCE CURVE

[NORMAL MODE]

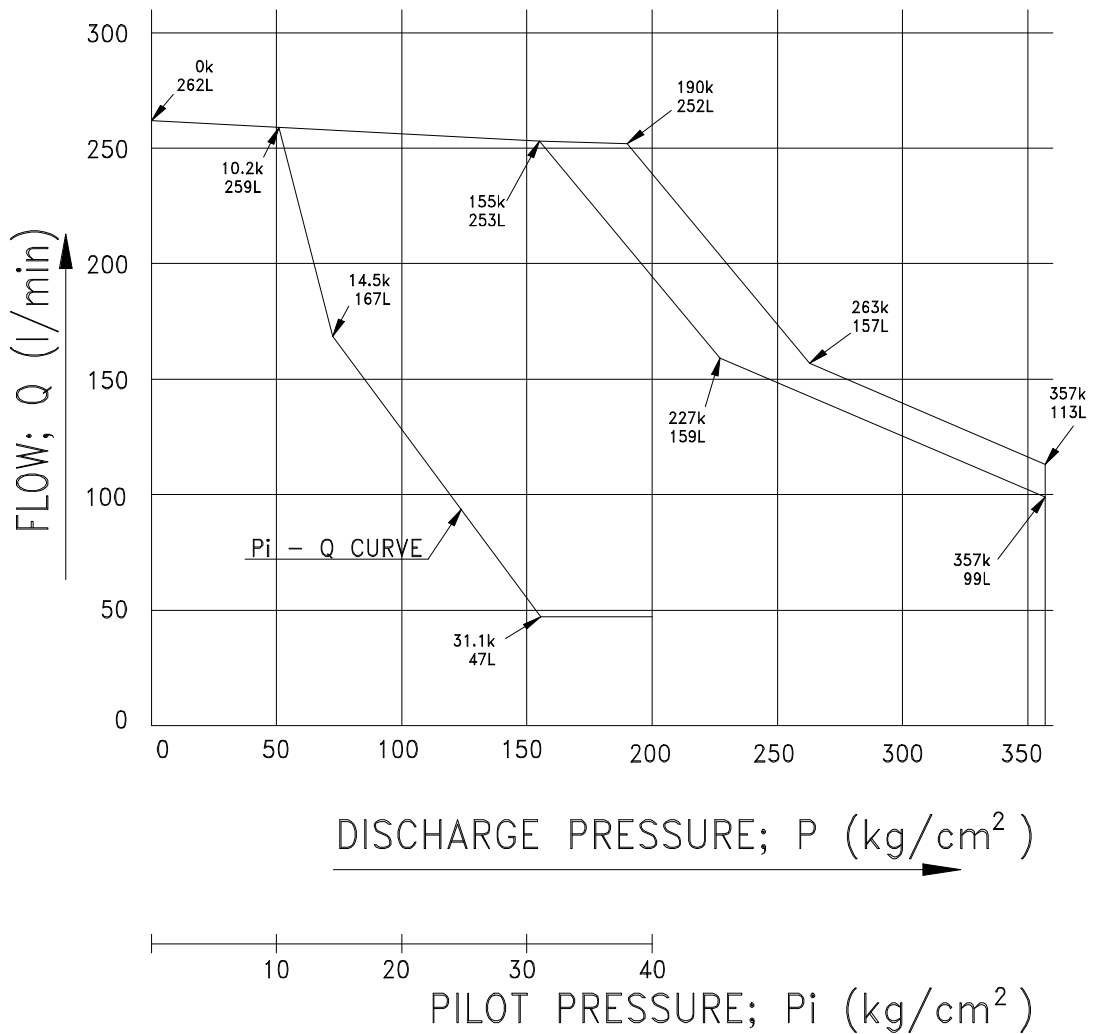
INPUT rpm ; 1900

INPUT POWER (INCLUDING GEAR PUMP) ; 205 PS

[POWER MODE]

INPUT rpm ; 1900

INPUT POWER (INCLUDING GEAR PUMP) ; 238 PS



MODEL	SOLAR 340LC-V		9/27
-------	---------------	--	------

## 5. SWING MECHANISM

### 1) SWING MOTOR

TYPE	:	AXIAL PISTON
DISPLACEMENT	:	250 cc/rev
CROSSOVER RELIEF VALVE SETTING	:	270 kgf/cm <sup>2</sup> @ 250 Liter/min
MAX. SUPPLY FLOW (@1900 RPM)	:	262 Liter/min
MOTOR SHAFT SPEED	:	1119 rpm
MOTOR SHAFT TORQUE	:	107.4 kgf.m

### 2) SWING REDUCTION GEAR

DRIVE TYPE	:	2- STAGE PLANETARY GEAR
REDUCTION RATIO	:	19.56
MAX. OUTPUT SPEED	:	57.2 rpm
MAX. OUTPUT TORQUE	:	2101 kgf.m

### 3) PINION GEAR

TYPE	:	SPUR GEAR
GEAR P.C.D.	:	196 mm
No. OF TEETH	:	14
MODULE	:	14

### 4) SWING BEARING

TYPE	:	BALL BEARING, INTERNAL GEAR
GEAR P.C.D.	:	1260 mm
No. OF TEETH	:	90
BALL DIA.	:	38.1 mm
RACE O.D.	:	1542 mm
RACE HIEGHT	:	122 mm
STATIC THRUST LOAD	:	588600 kg

### 5) SWING PERFORMANCE

MAX. SWING SPEED (EFF.=0.99)	:	8.9 rpm
MAX. SWING TORQUE (EFF.=0.87)	:	11752 kgf.m

MODEL

SOLAR 340LC-V

10/27

6) PARKING BRAKE

CONTROL TYPE : PILOT PRESSURE, MECHANICAL  
BRAKE TORQUE : 107 kgf.m  
BRAKE RELEASE PRESSURE : 30 kgf/cm<sup>2</sup>

7) MOTOR ACCESSARY

BRAKE TIME DELAYER : 6.5 ± 1.5 sec

MODEL

SOLAR 340LC-V

11/27

## 6. TRAVEL SYSTEM

### 1) TRAVEL MOTOR

TYPE	:	AXIAL PISTON, 2- SPEED
DISPLACEMENT	:	195 / 127 cc/rev
CROSSOVER RELIEF VALVE SETTING	:	335 kgf/cm <sup>2</sup> @ 25 Liter/min
MAX. SUPPLY FLOW	:	280 Liter/min
MOTOR SHAFT SPEED	:	1436 / 2205 rpm
MOTOR SHAFT TORQUE	:	102.4 / 66.7 kgf.m

### 2) REDUCTION GEAR

TYPE	:	3- STAGE PLANETERY GEAR
REDUCTION GEAR RATIO	:	63.843
MAX. OUTOUT SPEED	:	22.5 / 34.5 rpm
MAX. OUTPUT TORQUE	:	6539 / 4258 kgf.m

### 3) SPROCKET

SPROCKET P.C.D.	:	753 mm
TRACK LINK PITCH	:	203.2 mm
No. OF TEETH	:	23

### 4) TRAVELLING PERFORMANCE

TRAVELLING SPEED (EFF.=0.98/0.96)	:	3.1 / 4.6 km/hr
TRACTION FORCE (EFF.=0.80)	:	27.8 / 19.7 ton
GRADEABILITY	:	70 %

### 5) PARKING BRAKE

CONTROL TYPE	:	MAIN PRESSURE, MECHANICAL
BRAKE TORQUE	:	2830 kgf.m
BRAKE RELEASE PRESSURE	:	8.5 ± 1.5 kgf/cm <sup>2</sup>

MODEL

SOLAR 340LC-V

12/27

## 7. UNDER CARRIAGE

### 1) RECOIL MECHANISM

TYPE	:	HYDRAULIC ADJUSTED
RECOIL SPRING PRELOAD	:	17197 kg
RECOIL SPRING MAX. LOAD	:	26578 kg
RECOIL SPRING STROKE	:	170 mm
RECOIL ADJUST CYLINDER STROKE	:	110 mm
ADJESTER TYPE	:	GREASE CYLINDER

### 2) ROLLERS ; LOWER

FLANGE TYPE	:	SINGLE
Q'TY PER SIDE	:	9
DIA.	:	168 mm

### 3) ROLLERS ; UPPER

FLANGE TYPE	:	SINGLE
Q'TY PER SIDE	:	2
DIA.	:	142 mm

### 4) FRONT IDLER

DIA.	:	600 mm
------	---	--------

### 5) TRACK LINK

No. OF LINK PER SIDE	:	51
LINK PITCH	:	203.2 mm
PIN DIA.	:	44.5 mm

### 6) TRACK SHOE

No. OF SHOE PER SIDE	:	51
----------------------	---	----

SHOE WIDTH (mm)	GROUND PRESSURE (kgf/cm <sup>2</sup> )	MACHINE WEIGHT (ton)
STD. 600G	0.65	33.9
OPT. 700G	0.56	34.3
OPT. 800G	0.50	34.7
OPT. 850G	0.47	34.9

MODEL

**SOLAR 340LC-V**

13/27

## 8. HYDRAULIC CYLINDERS

	B00M	ARM	BUCKET
QUANTITY	2	1	1
BORE	150	170	150
STROKE	1440	1812	1300
ROD DIA.	100	115	100
CLOSED LENGTH	2000	2432	1870
HEAD END CUSHION	X	0	X
ROD END CUSHION	0	0	0

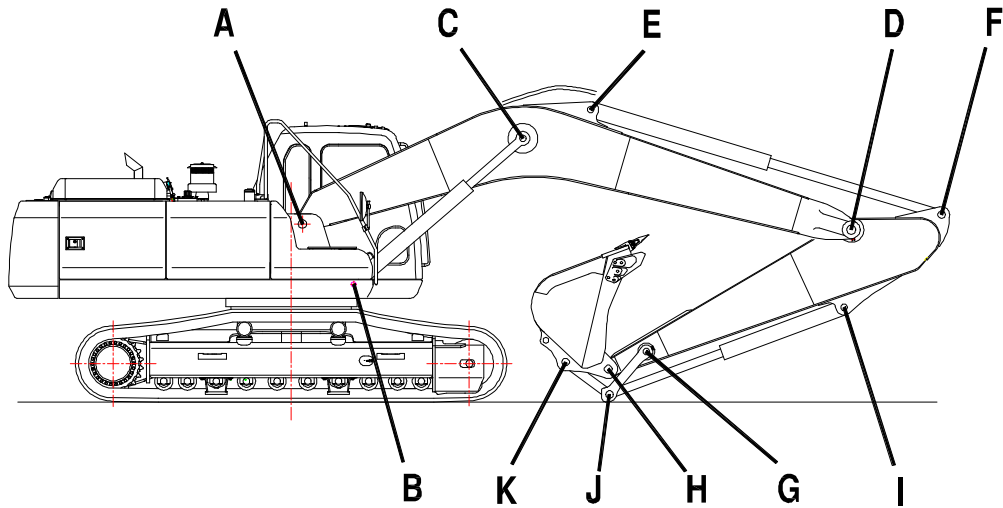
MODEL

SOLAR 340LC-V

14/27

## 9. FRONT

### 1) FRONT LINK PIN SIZES



POINT	DIA. (mm)	LENGTH (mm)
A	110	1047
B	100	265
C	100	918
D	110	597
E	100	289
F	100	289
G	90	540
H	100	597
I	100	265
J	100	540
K	100	597

### 2) FRONT ATTACHMENTS

#### 2-1) BOOM

	LENGTH (mm)	WEIGHT (kg)
STD. BOOM	6500	2719

MODEL

SOLAR 340LC-V

15/27

2- 2) ARM

	LENGTH (mm)	WEIGHT (kg)	DIGGING FORCE (NOM./PRESS.UP, ton)
STD. ARM	3200	1565	[SAE] 17.4 / 16.4 , [ISO] 17.9 / 16.9
SHORT ARM	2600	1452	[SAE] 21.2 / 20.0 , [ISO] 21.9 / 20.6
LONG ARM	4000	1673	[SAE] 14.7 / 13.9 , [ISO] 15.1 / 14.2

2- 3) BUCKET

	CAPACITY (m <sup>3</sup> )			BUCKET WIDTH (mm)		DIGGING FORCE (NOM./PRESS.UP, ton)
	CECE	SAE	STRUCK	W/CUTTER	W/O CUTTER	
STD. BUCKET	1.3	1.48	1.13	1456	1410	[SAE] 21.8 / 20.5 [ISO] 24.5 / 23.1
OPT. BUCKET	1.1	1.25	0.96	1273	1228	
OPT. BUCKET	1.4	1.61	1.20	1546	1500	
OPT. BUCKET	1.6	1.83	1.37	1723	1678	

3) OPTION PIPINGS

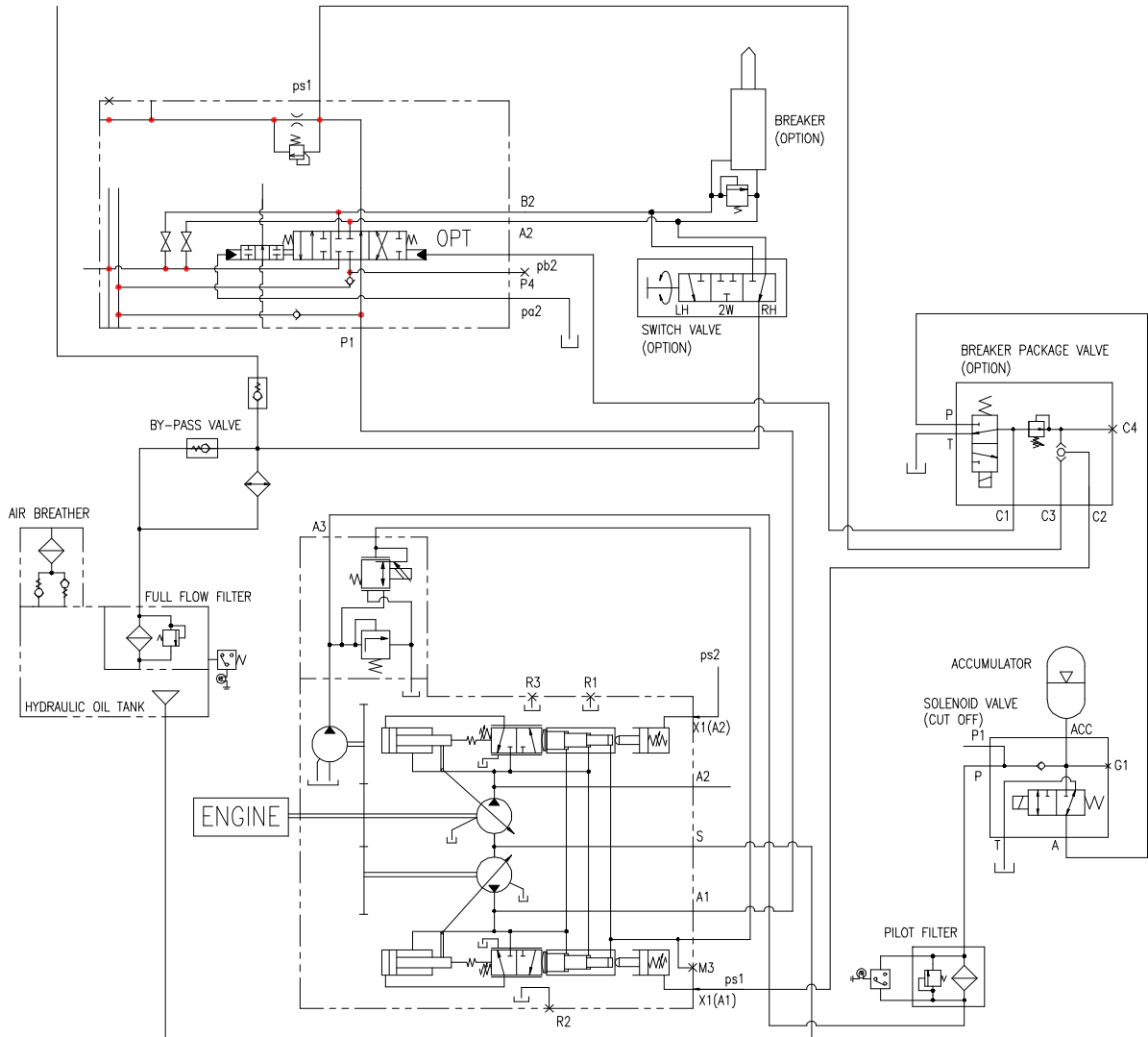
MAIN SUPPLY PIPING	:	OPTION
FRONT SUPPLY PIPING	:	OPTION
PILOT PIPING	:	OPTION
AVAILABLE ATTACHMENT	:	BREAKER

MODEL

SOLAR 340LC- V

16/27

- BREAKER CIRCUIT



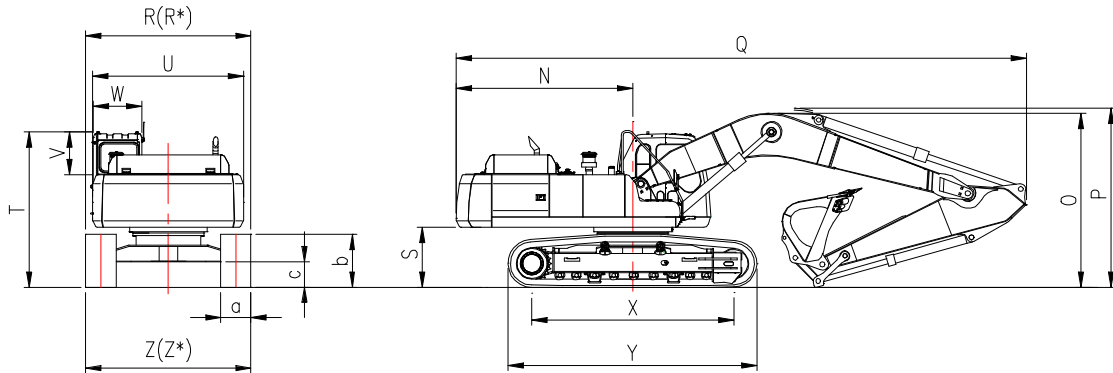
MODEL

SOLAR 340LC-V

17/27

## 10. DIMENSIONS AND WORKING RANGE

### 1) DIMENSIONS



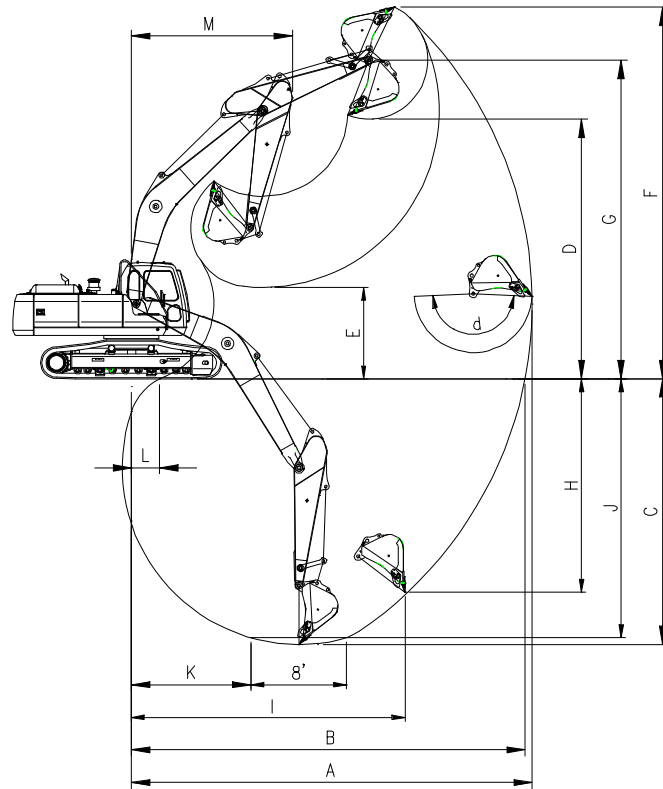
BOOM TYPE (ONE PIECE)	(mm)	6500		
ARM TYPE	(mm)	3200	2600	4000
BUCKET TYPE (PCSA)	(m <sup>3</sup> )	1.48	1.83	1.25
TAIL SWING RADIUS	(mm) N	3500	-	-
SHIPPING HEIGHT (BOOM)	(mm) O	3440	3485	3880
SHIPPING HEIGHT (HOSE)	(mm) P	3550	3600	3990
SHIPPING LENGTH	(mm) Q	11330	11425	11340
SHIPPING WIDTH (STD.)	(mm) R	3280	-	-
SHIPPING WIDTH (NARROW)	(mm) R*	3000	-	-
C/WEIGHT CLEARANCE	(mm) S	1195	-	-
HEIGHT OVER CAB.	(mm) T	3080	-	-
HOUSE WIDTH	(mm) U	2990	-	-
CAB. HEIGHT ABOVE HOUSE	(mm) V	845	-	-
CAB. WIDTH	(mm) W	960	-	-
TUMBLER DISTANCE	(mm) X	4010	-	-
TRACK LENGTH	(mm) Y	4960	-	-
UNDERCARRIAGE WIDTH (STD.)	(mm) Z	3280	-	-
UNDERCARRIAGE WIDTH (NARROW)	(mm) Z*	3000	-	-
SHOE WIDTH	(mm) a	600	-	-
TRACK HEIGHT	(mm) b	1054	-	-
CAR BODY CLEARANCE	(mm) c	506	-	-

MODEL

SOLAR 340LC-V

18/27

2) WORKING RANGE



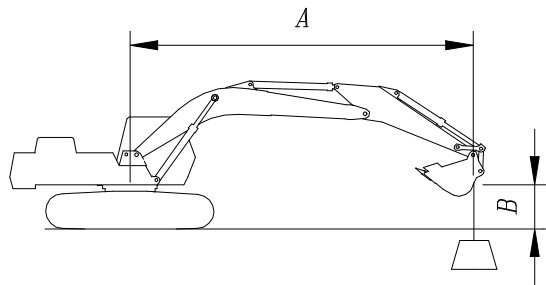
BOOM TYPE (ONE PIECE)	(mm)	6500			
ARM TYPE	(mm)	3200	2600	4000	
BUCKET TYPE (PCSA)	(m <sup>3</sup> )	1.48	1.83	1.25	
MAX. DIGGING REACH	(mm)	A	11230	10620	11990
MAX. DIGGING REACH (GROUND)	(mm)	B	11040	10420	11810
MAX. DIGGING DEPTH	(mm)	C	7670	7070	8480
MAX. LOADING HEIGHT	(mm)	D	7270	6890	7640
MIN. LOADING HEIGHT	(mm)	E	2655	3265	1850
MAX. DIGGING HEIGHT	(mm)	F	10440	10010	10820
MAX. BUCKET PIN HEIGHT	(mm)	G	8965	8585	9335
MAX. VERTICAL WALL DEPTH	(mm)	H	6200	5320	6990
MAX. RADIUS VERTICAL	(mm)	I	7485	7560	7715
MAX. DEPTH TO 8' LINE	(mm)	J	7510	6860	8340
MIN. RADIUS 8' LINE	(mm)	K	3265	3200	3295
MIN. DIGGING REACH	(mm)	L	1100	2305	- 326
MIN. SWING RADIUS	(mm)	M	4490	4510	4470
BUCKET ANGLE	(deg)	d	179	←	←

MODEL

SOLAR 340LC-V

19/27

# 11. LIFTING CAPACITIES



- TRACK WIDTH : 3.28 (10' 9") STD TRACK
- BOOM : 6.5m (21' 4")
- ARM : 3.2m (10' 5")
- BUCKET : SAE 1.48m<sup>3</sup> HEAPED  
(CECE 1.3m<sup>3</sup>)
- SHOE : 600mm (24")
- COUNTER WEIGHT : 6400 kg (14109 lb)
- UNIT : 1000 kg (1000 lb)



: RATING OVER FRONT



: RATING OVER SIDE OR 360 degree

## METRIC

A(m) \ B(m)	2		3		4		5		6		7		8		9		MAX. REACH			
																			A(m)	
7														*6.11	*6.11			*6.13	5.69	8.31
6														*6.24	6.06			*6.21	5.04	8.84
5												*6.88	*6.88	*6.56	5.96	*6.38	4.82	*6.37	4.60	9.23
4							*9.69	*9.69	*8.39	*8.39	*7.56	7.28	*7.00	5.83	*6.63	4.75	*6.51	4.31	9.50	
3					*14.97	*14.97	*11.47	*11.47	*9.52	9.01	*8.30	7.06	*7.49	5.69	*6.94	4.66	6.41	4.12	9.65	
2					*17.56	16.24	*13.10	11.48	*10.60	8.69	*9.04	6.85	*7.99	5.55	7.11	4.57	6.29	4.02	9.70	
1					*16.12	15.72	*14.36	11.10	*11.51	8.43	*9.69	6.67	*8.44	5.42	7.02	4.49	6.29	4.01	9.64	
0(GROUND)			*8.24	*8.24	*16.30	15.47	*15.14	10.86	*12.16	8.24	*10.18	6.53	8.36	5.32	6.95	4.42	6.41	4.08	9.47	
-1	*8.21	*8.21	*11.38	*11.38	*18.51	15.39	*15.46	10.73	*12.51	8.12	10.20	6.44	8.28	5.26	6.91	4.39	6.69	4.24	9.20	
-2	*11.59	*11.59	*14.89	*14.89	*19.40	15.40	*15.36	10.70	*12.54	8.07	10.16	6.40	8.26	5.23			7.15	4.54	8.79	
-3	*15.13	*15.13	*18.93	*18.93	*18.52	15.50	*14.86	10.73	*12.22	8.09	10.17	6.41	8.28	5.26			7.91	5.03	8.25	
-4	*19.11	*19.11	*21.77	*21.77	*17.13	15.67	*13.89	10.84	*11.46	8.16	*9.51	6.48					*8.54	5.83	7.53	
-5	*23.82	*23.82	*18.86	*18.86	*15.06	*15.06	*12.29	11.02	*10.05	8.32							*8.54	7.26	6.58	
-6			*14.71	*14.71	*11.92	*11.92	*9.59	*9.59									*8.97	*8.97	5.27	

## FEET

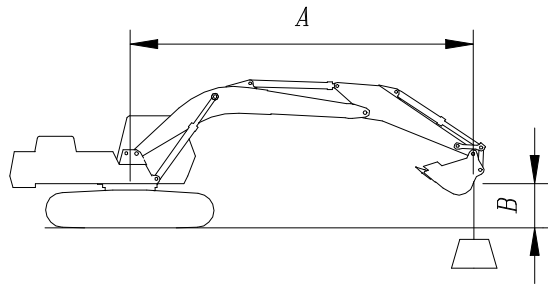
A(ft) \ B(ft)	10		15		20		25		30		MAX. REACH		A(ft)
25							*13.35	*13.35			*13.50	*13.50	25' 11"
20							*13.76	*13.76			*13.67	11.22	28' 10"
15					*17.00	*17.00	*15.16	14.15	*14.23	10.27	*14.17	9.83	30' 8"
10	*23.58	*23.58	*27.75	*27.75	*20.57	19.41	*17.06	13.60	*15.12	10.00	14.14	9.09	31' 8"
5			*34.01	28.52	*23.96	18.42	*18.97	13.06	15.18	9.72	13.83	8.82	31' 9"
0(GROUND)	*18.76	*18.76	*37.20	27.50	*26.31	17.73	19.88	12.65	14.95	9.51	14.14	8.98	30' 1"
-5	*29.54	*29.54	*37.62	27.19	*27.21	17.41	19.64	12.44			15.22	9.66	29' 6"
-10	*42.79	*42.79	*35.79	27.33	*26.41	17.41	19.66	12.45			17.54	11.15	27'
-15	*44.06	*44.06	*31.40	27.84	*23.28	17.74					*19.23	14.39	23'
-20	*31.03	*31.03	*22.48	*22.48							*19.75	*19.75	16' 9"

1. RATINGS ARE BASED ON SAE J1097
2. LOAD POINT IS THE HOOK ON THE BACK OF THE BUCKET.
3. \* RATED LOADS ARE BASED ON HYDRAULIC CAPACITY.
4. RATED LOADS DO NOT EXCEED 87% OF HYD. CAPACITY OR 75% OF TIPPING CAPACITY.

MODEL

SOLAR 340LC-V

20/27



TRACK WIDTH : 3.00m (9' 10") OPT TRACK  
 BOOM : 6.5m (21' 4")  
 ARM : 2.6m (8' 6")  
 BUCKET : SAE 1.83m<sup>3</sup> HEAPED  
 (CECE 1.6m<sup>3</sup>)  
 SHOE : 600mm (24")  
 COUNTER WEIGHT : 6400 kg (14109 lb)  
 UNIT : 1000 kg (1000 lb)



: RATING OVER FRONT



: RATING OVER SIDE OR 360 degree

METRIC

A(m)	2		3		4		5		6		7		8		9		MAX. REACH				
																			A(m)		
7												*6.53	*6.53						*6.55	5.76	7.51
6												*6.81	6.48	*6.64	5.07				*6.63	4.96	8.09
5									*7.96	*7.96	*7.30	6.33	*6.89	5.00					*6.76	4.44	8.52
4					*13.57	*13.57	*10.60	10.59	*8.96	7.92	*7.93	6.15	*7.27	4.88					*6.92	4.09	8.81
3					*16.59	14.12	*12.30	10.08	*10.02	7.61	*8.62	5.95	*7.71	4.76					6.97	3.88	8.97
2					*14.40	13.44	*13.75	9.64	*10.99	7.33	*9.28	5.77	*8.14	4.64	6.86	3.78			6.83	3.77	9.02
1					*13.65	13.14	*14.73	9.35	*11.75	7.11	*9.82	5.62	8.21	4.54					6.74	3.75	8.96
O(GROUND)					*16.14	13.05	*15.21	9.19	*12.22	6.97	10.05	5.51	8.13	4.46					7.01	3.83	8.78
- 1			*12.47	*12.47	*19.27	13.06	*15.24	9.13	*12.38	6.90	9.98	5.44	8.08	4.42					7.38	4.03	8.48
- 2	*14.07	*14.07	*17.50	*17.50	*18.52	13.14	*14.89	9.14	*12.20	6.89	9.97	5.43	8.09	4.43					8.02	4.39	8.04
- 3	*18.79	*18.79	*21.65	*21.65	*17.34	13.27	*14.11	9.22	*11.64	6.94	*9.67	5.48							*	5.00	7.44
- 4	*24.14	*24.14	*19.28	*19.28	*15.61	13.48	*12.81	9.37	*10.54	7.06									*	6.06	6.64
- 5			*15.90	*15.90	*13.05	*13.05	*10.68	9.61											*	8.23	5.53

FEET

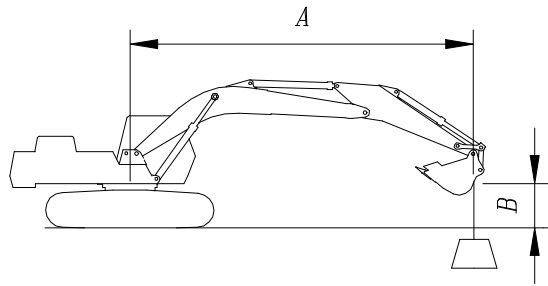
A(ft)	10		15		20		25		MAX. REACH		
											A(ft)
25									*14.40	14.32	23' 2"
20							*14.68	12.28	*14.60	11.07	26' 5"
15					*18.24	17.39	*15.89	11.91	*15.04	9.42	28' 5"
10			*30.14	25.51	*21.62	16.40	*17.61	11.42	15.40	8.57	29' 5"
5			*35.43	23.90	*24.63	15.54	*19.27	10.95	15.02	8.26	29' 7"
O(GROUND)			*37.27	23.26	*26.44	15.00	19.36	10.63	15.45	8.45	28' 10"
- 5	*33.78	*33.78	*36.59	23.19	*26.70	14.81	19.22	10.50	16.92	9.25	27' 2"
- 10	*46.99	*46.99	*33.79	23.48	*25.12	14.93			*19.63	11.10	24' 4"
- 15	*38.19	*38.19	*28.12	24.14					*20.76	15.61	19' 10"

1. RATINGS ARE BASED ON SAE J1097
2. LOAD POINT IS THE HOOK ON THE BACK OF THE BUCKET.
3. \* RATED LOADS ARE BASED ON HYDRAULIC CAPACITY.
4. RATED LOADS DO NOT EXCEED 87% OF HYD. CAPACITY OR 75% OF TIPPING CAPACITY.

MODEL

SOLAR 340LC-V

21/27



TRACK WIDTH : 3.28m (10' 9") STD TRACK  
 BOOM : 6.5m (21' 4")  
 ARM : 4.0m (13' 1")  
 BUCKET : SAE 1.25m<sup>3</sup> HEAPED  
 (CECE 1.1m<sup>3</sup>)  
 SHOE : 600mm (24")  
 COUNTER WEIGHT : 6400 kg (14109 lb)  
 UNIT : 1000 kg (1000 lb)



: RATING OVER FRONT



: RATING OVER SIDE OR 360 degree

METRIC

A(m) B(m)	2		3		4		5		6		7		8		9		10		MAX. REACH				
																					A(m)		
8																					*4.84	*4.84	8.60
7															*5.42	5.12					*4.81	*4.81	9.22
6													*5.44	*5.44	*5.49	5.08					*4.85	4.40	9.70
5													*5.81	*5.81	*5.71	5.01	*5.18	4.11			*4.95	4.06	10.05
4											*6.69	*6.69	*6.30	6.03	*6.02	4.91	*5.86	4.05			*5.11	3.83	10.30
3			*17.61	*17.61	*12.46	*12.46	*9.93	*9.93	*8.46	*8.46	*7.51	7.30	*6.86	5.87	*6.40	4.81	*6.09	3.98			*5.33	3.68	10.44
2			*10.84	*10.84	*15.46	*15.46	*11.77	*11.77	*9.67	9.00	*8.34	7.07	*7.43	5.71	*6.80	4.70	6.09	3.91			5.62	3.59	10.48
1			*8.13	*8.13	*17.76	16.66	*13.34	11.49	*10.76	8.69	*9.11	6.86	*7.98	5.56	7.13	4.59	6.01	3.85			5.61	3.57	10.43
0(GND)	*4.75	*4.75	*8.84	*8.84	*17.84	15.89	*14.49	11.16	*11.63	8.45	*9.75	6.68	*8.44	5.54	7.04	4.51	5.96	3.79			5.70	3.62	10.28
- 1	*7.18	*7.18	*1.67	*1.67	*18.10	15.66	*15.18	10.95	*12.22	8.28	*1.21	6.56	8.38	5.34	6.97	4.44	5.92	3.76			5.90	3.74	10.02
- 2	*9.71	*9.71	*13.11	*13.11	*19.83	15.58	*15.44	10.84	*12.50	8.18	10.24	6.48	8.31	5.28	6.93	4.41					6.23	3.95	9.66
- 3	*12.47	*12.47	*16.10	*16.10	*19.38	15.59	*15.29	10.81	*12.47	8.15	10.21	6.44	8.29	5.27	6.94	4.41					6.75	4.29	9.16
- 4	*15.57	*15.57	*19.74	*19.74	*18.44	15.69	*14.71	10.86	*12.06	8.17	*10.07	6.46	8.33	5.30							7.57	4.83	8.53
- 5	*19.21	*19.21	*21.86	*21.86	*16.92	15.86	*13.62	10.97	*11.19	8.26	*9.24	6.55									*7.99	5.70	7.70
- 6	*23.69	*23.69	*18.60	*18.60	*14.61	*14.61	*11.81	11.17	*9.57	8.43											*8.29	7.28	6.62
- 7			*13.89	*13.89	*11.04	*11.04	*8.71	*8.71													*8.41	*8.41	5.13

FEET

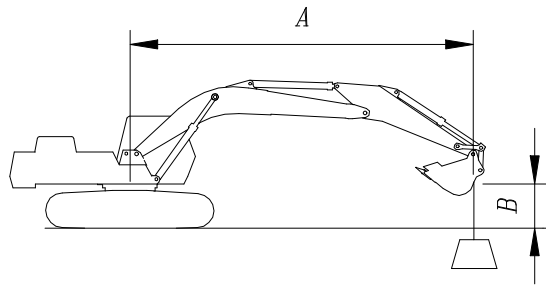
A(ft) B(ft)	10		15		20		25		30		MAX. REACH		A(ft)	
25												*10.62	*10.62	29' 1"
20										*12.11	10.88	*10.67	9.78	31' 8"
15								*13.44	*13.44	*12.82	10.64	*11.04	8.71	33' 4"
10	*37.38	*37.38	*23.63	*23.63	*18.28	*18.28	*15.53	14.04	*13.95	10.32	*11.72	8.12	34' 3"	
5	*20.51	*20.51	*30.92	29.69	*22.13	19.03	*17.73	13.43	*15.21	9.97	12.36	7.88	34' 4"	
0(GND)	*20.12	*20.12	*35.70	28.26	*25.16	18.19	*19.59	12.93	15.13	9.68	12.57	7.98	33' 9"	
- 5	*26.71	*26.71	*37.60	27.62	*26.84	17.69	19.83	12.61	14.94	9.51	13.34	8.47	32' 4"	
- 10	*36.38	*36.38	*37.08	27.51	*26.97	17.53	19.71	12.50			14.95	9.51	30'	
- 15	*49.70	*49.70	*34.17	27.80	*25.18	17.67	*19.00	12.64			*17.32	11.61	26' 6"	
- 20	*39.68	*39.68	*27.93	*27.93	*20.19	18.19					*18.32	16.54	21' 4"	

1. RATINGS ARE BASED ON SAE J1097
2. LOAD POINT IS THE HOOK ON THE BACK OF THE BUCKET.
3. \* RATED LOADS ARE BASED ON HYDRAULIC CAPACITY.
4. RATED LOADS DO NOT EXCEED 87% OF HYD. CAPACITY OR 75% OF TIPPING CAPACITY.

MODEL

SOLAR 340LC-V

22/27



TRACK WIDTH : 3.48 (11' 5") STD TRACK  
 BOOM : 6.5m (21' 4")  
 ARM : 3.2m (10' 5")  
 BUCKET : SAE 1.48m<sup>3</sup> HEAPED  
 (CECE 1.3m<sup>3</sup>)  
 SHOE : 800mm (24")  
 COUNTER WEIGHT : 6400 kg (14109 lb)  
 UNIT : 1000 kg (1000 lb)



: RATING OVER FRONT



: RATING OVER SIDE OR 360 degree

METRIC

A(m)	2		3		4		5		6		7		8		9		MAX. REACH			
																			A(m)	
7														*6.11	*6.11			*6.13	5.81	8.31
6														*6.24	6.19			*6.21	5.15	8.84
5											*6.88	*6.88	*6.56	6.09	*6.38	4.94	*6.37	4.71	9.23	
4							*9.69	*9.69	*8.39	*8.39	*7.56	7.44	*7.00	5.96	*6.63	4.86	*6.51	4.41	9.50	
3					*14.97	*14.97	*11.47	*11.47	*9.52	9.20	*8.30	7.22	*7.49	5.82	*6.94	4.78	6.57	4.22	9.65	
2					*17.56	16.58	*13.10	11.72	*10.60	8.88	*9.04	7.01	*7.99	5.68	*7.26	4.68	6.45	4.13	9.70	
1					*16.12	16.06	*14.36	11.34	*11.51	8.62	*9.69	6.83	*8.44	5.55	7.20	4.60	6.45	4.11	9.64	
O(GROUND)			*8.24	*8.24	*16.30	15.81	*15.14	11.10	*12.16	8.43	*10.18	6.69	8.56	5.46	7.13	4.54	6.58	4.18	9.47	
- 1	*8.21	*8.21	*11.38	*11.38	*18.51	15.73	*15.46	10.97	*12.51	8.31	10.45	6.59	8.49	5.39	7.09	4.50	6.86	4.36	9.20	
- 2	*11.59	*11.59	*14.89	*14.89	*19.40	15.74	*15.36	10.94	*12.54	8.26	10.41	6.55	8.46	5.37			7.34	4.66	8.79	
- 3	*15.13	*15.13	*18.93	*18.93	*18.52	15.84	*14.86	10.97	*12.22	8.28	*10.23	6.56	8.49	5.39			8.11	5.15	8.25	
- 4	*19.11	*19.11	*21.77	*21.77	*17.13	16.01	*13.89	11.08	*11.46	8.35	*9.51	6.63					*8.54	5.97	7.53	
- 5	*23.82	*23.82	*18.86	*18.86	*15.06	*15.06	*12.29	11.27	*10.05	8.51							*8.54	7.42	6.58	
- 6			*14.71	*14.71	*11.92	*11.92	*9.59	*9.59									*8.97	*8.97	5.27	

FEET

A(ft)	10		15		20		25		30		MAX. REACH		A(ft)
25							*13.35	*13.35			*13.50	*13.50	25' 11"
20							*13.76	*13.76			*13.67	11.48	28' 10"
15					*17.00	*17.00	*15.16	14.46	*14.23	10.52	*14.17	10.07	30' 8"
10	*23.58	*23.58	*27.75	*27.75	*20.57	19.82	*17.06	13.91	*15.12	10.25	14.50	9.33	31' 8"
5			*34.01	29.13	*23.96	18.83	*18.97	13.37	15.56	9.97	14.19	9.06	31' 9"
O(GROUND)	*18.76	*18.76	*37.20	28.11	*26.31	18.14	20.37	12.96	15.33	9.76	14.51	9.22	30' 1"
- 5	*29.54	*29.54	*37.62	27.80	*27.21	17.82	20.13	12.74			15.61	9.91	29' 6"
- 10	*42.79	*42.79	*35.79	27.94	*26.41	17.81	20.15	12.76			17.98	11.43	27'
- 15	*44.06	*44.06	*31.40	28.45	*23.28	18.14					*19.23	14.73	23'
- 20	*31.03	*31.03	*22.48	*22.48							*19.75	*19.75	16' 9"

1. RATINGS ARE BASED ON SAE J1097
2. LOAD POINT IS THE HOOK ON THE BACK OF THE BUCKET.
3. \* RATED LOADS ARE BASED ON HYDRAULIC CAPACITY.
4. RATED LOADS DO NOT EXCEED 87% OF HYD. CAPACITY OR 75% OF TIPPING CAPACITY.

MODEL	SOLAR 340LC-V			23/27
-------	---------------	--	--	-------

## 12. PERFORMANCE DATA

### 1) MAIN RELIEF PRESSURE

WORKING, TRAVEL	:	330 [ <sup>+10</sup> / <sub>0</sub> ] kg/cm <sup>2</sup>
PRESSURE UP	:	350 [ <sup>+10</sup> / <sub>0</sub> ] kg/cm <sup>2</sup>

### 2) ACTUATOR SPEED

OPERATION		UNIT	NORMAL	POWER
BOOM	UP	SEC	3.5 ± 0.4	3.4 ± 0.4
	DOWN	SEC	2.9 ± 0.3	2.9 ± 0.3
ARM	CROWD	SEC	4.9 ± 0.4	4.8 ± 0.4
	DUMP	SEC	3.5 ± 0.3	3.3 ± 0.3
BUCKET	CROWD	SEC	3.8 ± 0.4	3.8 ± 0.4
	DUMP	SEC	3.1 ± 0.3	3.1 ± 0.3
SWING (3 REVOLUTIONS)		SEC	20.3 ± 1.5	20.3 ± 1.5
DOZER	UP	SEC	-	-
	DOWN	SEC	-	-
JACK-UP SPEED (3 TURNS)	LOW	SEC	35.7 ± 2.0	35.7 ± 2.0
	HIGH	SEC	23.8 ± 1.5	23.8 ± 1.5
TRAVEL SPEED (20 m)	LOW	SEC	23.8 ± 1.5	23.8 ± 1.5
	HIGH	SEC	15.8 ± 1.0	15.8 ± 1.0
TRAVEL DEVIATION (20 m)	LOW	mm	MAX. 150	MAX. 150
	HIGH	mm	MAX. 150	MAX. 150

## 13. NOISE LEVEL (when noise reduction kit is applied)

L <sub>WA</sub>	GUARANTEED SOUND POWER LEVEL	:	106 dB(A) (2000/14/EC)
	MEASURED SOUND POWER LEVEL	:	106 dB(A) (2000/14/EC)
L <sub>pA</sub>	OPERATOR NOISE	:	76 dB(A) (ISO 6396)

MODEL

**SOLAR 340LC-V**

**24/27**

14. SUB GROUP WEIGHT

ITEM		UNIT	FIGURE	REMARKS	
SUPER STRUCTURE W/O FRONT		kg	15040	WITH COUNTER WEIGHT	
COUNTER WEIGHT		kg	6400		
LOWER STRUCTURE ASS'Y		kg	11500		
FRONT ASS'Y		kg	7360		
BOOM (6.5m)		kg	2533	WITH BUSH	
ARM (3.2m)		kg	1107	WITH BUSH	
BUCKET (1.48m <sup>3</sup> )		kg	1377		
BOOM CYL. (ea)		kg	285		
ARM CYL.		kg	420		
BUCKET CYL.		kg	270		
DOZER		kg	-		
DOZER CYL. (ea)		kg	-		
OPTION	ARM	2.6m	kg	1107	
		4.0m	kg	1332	
	BUCKET ; SAE (CECE)	1.25m <sup>3</sup> (1.1m <sup>3</sup> )	kg	1274	
		1.61m <sup>3</sup> (1.4m <sup>3</sup> )	kg	1436	
		1.83m <sup>3</sup> (1.6m <sup>3</sup> )	kg	1564	
		1.20m <sup>3</sup> (1.09m <sup>3</sup> )	kg	1307	H.D TYPE
		1.42m <sup>3</sup> (1.29m <sup>3</sup> )	kg	1437	H.D TYPE
		1.65m <sup>3</sup> (1.48m <sup>3</sup> )	kg	1534	H.D TYPE
		1.79m <sup>3</sup> (1.60m <sup>3</sup> )	kg	1620	H.D TYPE
		2.01m <sup>3</sup> (1.80m <sup>3</sup> )	kg	1716	H.D TYPE

MODEL

SOLAR 340LC-V

25/27

## 15. USER SERVICE DATA

COMPARTMENT/ GREASE JOINT	TYPE OF FLUID OR LUBRICANT	No, OF C/G	SERVICE INTERVAL (hr)						COM- MENTS
			10	50	250	500	1000	2000	
FRONT JOINT PIN	GREASE	20							
SWING BEARING	GREASE	3							
SWING GEAR	GREASE	1							
TRACK HYD. ADJUST	GREASE	1							
SWING DEVICE	GREASE	1							
	GEAR OIL	6							
TRAVEL DEVICE	GEAR OIL	2x5.5							
ENGINE OIL	ENGINE OIL	28							
OIL TANK	ISO VG #46	460							
FUEL TANK	DIESEL	550							
WATER SEPARATOR	WATER	1							
RADIATOR	WATER	58							
FULL FOW FILTER	ELEMENT	2							
PILOT FILTER	ELEMENT	1							
HYD. OIL SUC. FILTER	STRAINER	1							
ENGINE OIL FILTER	CARTRIDGE	1							
FUEL FILTER	CARTRIDGE	1							
AIR CLEANER	ELEMENT (INNER)	1							
	ELEMENT (OUTER)	1							
RADIATOR CORE	CORE	1							
OIL COOLER CORE	CORE	1							
INTER COOLER CORE	CORE	1							
AIR-CON COND. CORE	CORE	1							

: FIRST TIME ONLY  
: GREASING

: DRAIN WATER  
: REPLACING

: CHECK  
: CLEANING

MODEL

**SOLAR 340LC-V**

**26/27**

16. CIRCUITS

- HYDRAULIC CIRCUIT : 499- 00051
- ELECTRIC CIRCUIT : 599- 00042

MODEL	SOLAR 340LC-V			27/27
-------	---------------	--	--	-------